

Like 0

Tweet

Share

May 2016

# Earplay new chamber music

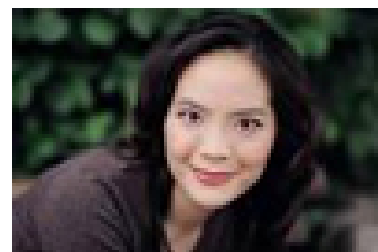


[earplay.org](http://earplay.org)

## From Here on Farther

Monday, May 16 7:30 ODC Theater · 3153 17th St, San Francisco

COMPOSERS  
CONCERT 3



Vivian Fung



Nick Bacchetto

Earplay's final main-stage concert of its 2016 season, **From Here on Farther**, will take the works of legacy and emerging composers on a colorful road trip. Commencing with the west coast premiere of Canadian composer Vivian Fung's *Birdsong* for violin and piano, and the world premiere of young Bay Area composer Nick Bacchetto's *Redintegration* for flute and string trio, stopping along the way at Wolpe's short eponymous quartet, Earplay's final concert will culminate with the late Lee Hyla's three-movement, seven-player iconoclastic masterpiece, *My Life on the Plains*. The core members of Earplay include Terrie Baune, violin; Tod Brody, flutes; Mary Chun, conductor; Peter Josheff, clarinets; Thalia Moore, cello; Ellen Ruth Rose, viola; and Brenda Tom, piano. Guest artists on

this concert include Jonathan Khuner, conductor; Jeff Anderle, bass clarinet; Diane Grubbe, flute; and Loren Mach, percussion.

The concert will be preceded by a composers' dialogue, beginning at 6:45pm, and followed by a reception.

### **Program**

Vivian Fung: *Birdsong* (2012) for violin and piano West Coast premiere

Nick Bacchetto: *RedIntegration* (2015) for flute, violin, viola, and cello World premiere; Earplay commission

Stefan Wolpe: *From Here on Farther* (1969) for clarinet, bass clarinet, violin, and piano

Lee Hyla: *My Life On the Plains* (2010) for clarinet, bass clarinet, violin, viola, cello, piano, and percussion

More info: [earplay.org](http://earplay.org)

<https://www.facebook.com/events/118064171933838/>

Tickets: \$25/general; \$10/students:

<https://www.odcdance.org/buytickets.php>



Stefan Wolpe



Lee Hyla

[Contact Us](#) | [earplay.org](http://earplay.org)

---

[Click to view this email in a browser](#)

If you no longer wish to receive these emails, please reply to this message with "Unsubscribe" in the subject line or simply click on the following link: [Unsubscribe](#)

---

Earplay  
560 29th St.  
San Francisco, California 94131-2239  
US

[Read](#) the VerticalResponse marketing policy.

**vertical** DELIVERED BY  
**response**  
Try It Free Today!