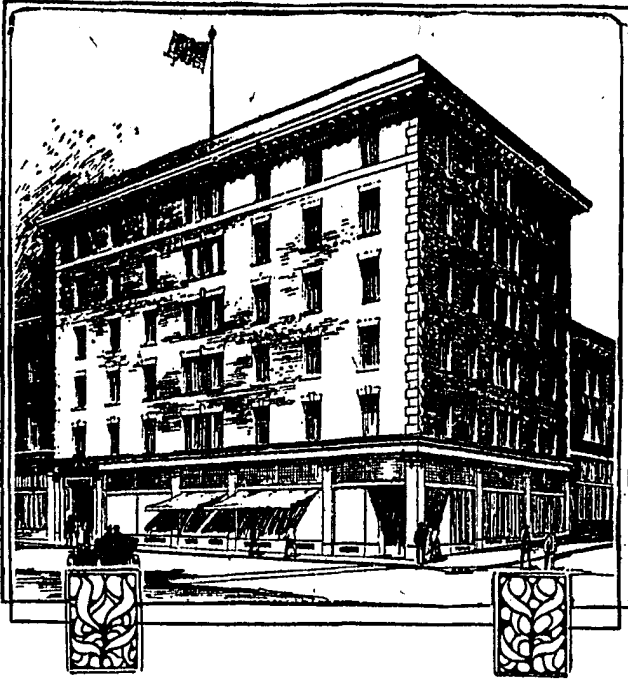


# SIX-STORY BUILDING AT ELLIS AND LARKIN



**T**HE Moffatt Estate Company is erecting a six-story brick and steel building on the northwest corner of Ellis and Larkin streets, which is to be one of the most imposing in that locality. The size of the lot is 60 by 90 feet. The basement and ground floor will be fitted for business purposes. The five upper floors will be divided into apartments of three, four and five rooms each. Every modern convenience will be added to the apartments. Crim & Scott are the architects.

### WANTS PARK IN MISSION.

The Mission Promotion Association asked the Supervisors yesterday to submit at the next bond-issue election a proposal that the city buy Mission blocks 171-174, inclusive, for a public park. These blocks are bounded by Twenty-ninth, Thirtieth, Noe and Castro streets. The petitioners call attention to the fact that south of Twentieth street the city has not fifty acres in park, while north of Twentieth it has twenty times that amount.

### STANFORD PLAYS PENSACOLA.

STANFORD UNIVERSITY, April 24.—The last practice game of the season will be played on the Stanford diamond to-morrow afternoon against the nine from the training ship Pensacola.